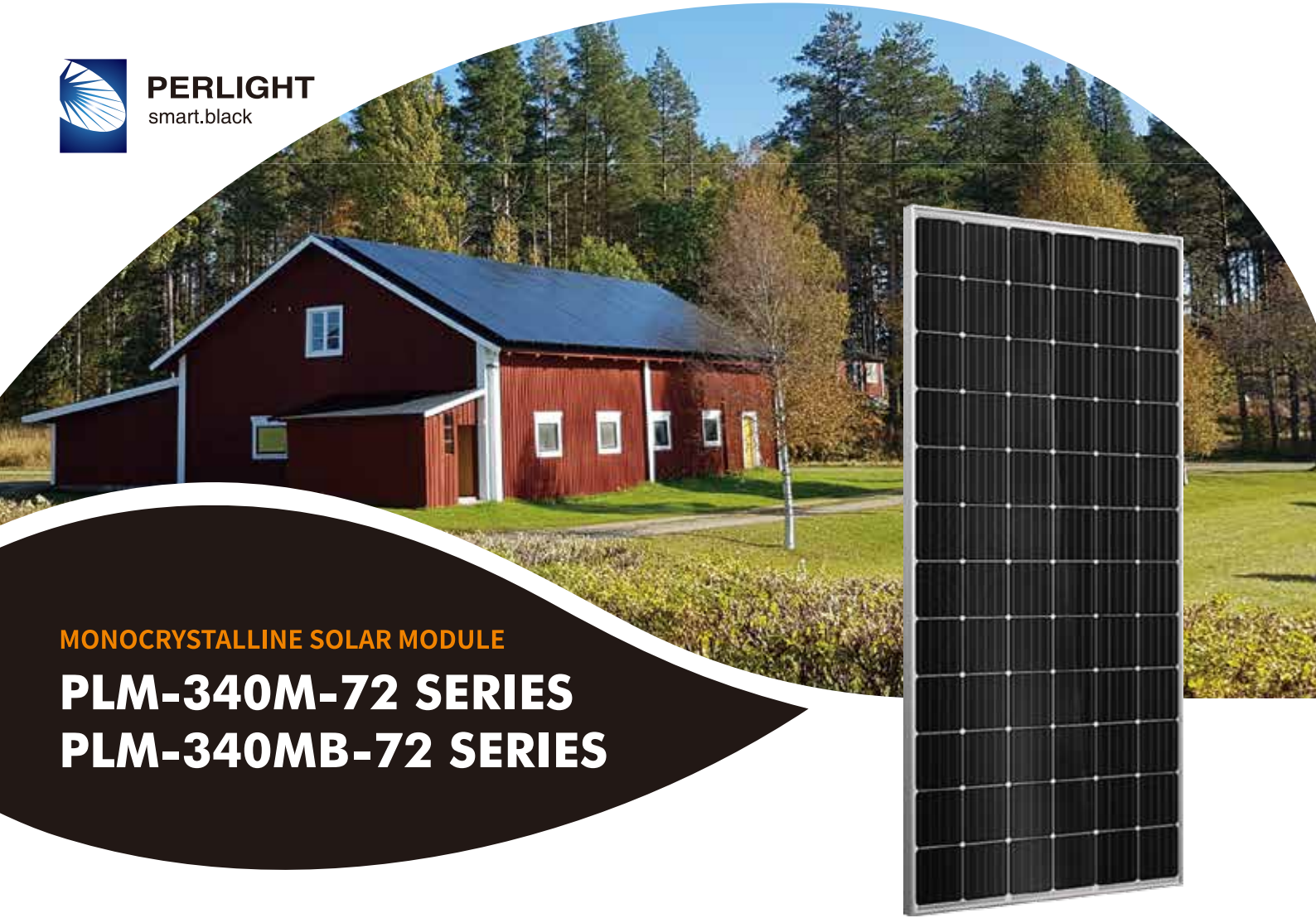




**PERLIGHT**  
smart.black



**MONOCRYSTALLINE SOLAR MODULE**

**PLM-340M-72 SERIES**  
**PLM-340MB-72 SERIES**

## PERLIGHT SOLAR

Founded in 2006, Perlight Solar is growing to be the world leading residential smart solar PV products manufacturer & service provider.

Based on more than 30 years manufacturing experience of Baolite Group, along with the implementation of MES & ERP system, Perlight Solar have realized lean and flexible manu-

facturing of solar cell & solar module.

With corporate values "Customer First, Talent Excellence, Pragmatic Innovation, Integrity & Win-Win", Perlight Solar will continue to provide excellent smart energy products & service to global families and vision to be the leading brand in global distributed smart energy.



**19.32%**

Maximum Module Efficiency



**12 Years**

Limited Product Warranty



**25 Years**

Performance Warranty



### Performance

Good performance even under low light conditions



### Reliability

Strict selection of raw materials and strict quality control ensure reliability

**PERLIGHTSOLAR**

# MONOCRYSTALLINE 72-CELL SERIES

## ELECTRICAL PERFORMANCE

Module type	PLM-340M-72 / PLM-340MB-72 series									
Power output	$P_{max}$	$W_p$	340	345	350	355	360	365	370	375
Power output tolerances $\Delta P_{max}$	$W$		0~+5							
Voltage at $P_{max}$	$V_{mpp}$	$V$	38.77	38.86	39.11	39.2	39.39	39.59	39.79	39.98
Current at $P_{max}$	$I_{mpp}$	$A$	8.77	8.88	8.95	9.06	9.14	9.22	9.30	9.38
Open-circuit voltage	$V_{oc}$	$V$	46.91	47.02	47.32	47.43	47.66	47.90	48.15	48.22
Short-circuit current	$I_{sc}$	$A$	9.45	9.51	9.58	9.64	9.70	9.75	9.81	9.89
Module Efficiency	Eff.	%	17.52	17.78	18.03	18.29	18.55	18.81	19.06	19.32

STC: 1000W/m<sup>2</sup> irradiance, 25°C cell temperature, AM 1.5g spectrum according to EN 60904-3.

Power measurement uncertainty is within +/- 3%

## THERMAL CHARACTERISTICS

Nominal operating cell temperature	NOCT	°C	45±2
Temperature coefficient of $P_{max}$	$\nu$	%/°C	-0.40
Temperature coefficient of $V_{oc}$	$\beta_{V_{oc}}$	%/°C	-0.30
Temperature coefficient of $I_{sc}$	$\alpha_{I_{sc}}$	%/°C	0.06

## OPERATING CONDITIONS

Max. system voltage	1000V <sub>DC</sub>	
Limiting reverse current	15A	
Operating temperature range	-40°C to 85°C	
Max. static load front (e.g., snow)	3800Pa	Safe factor: 1.5
Max. static load back (e.g., wind)	1600Pa	Safe factor: 1.5

## MECHANICAL CHARACTERISTICS

Front cover (material / thickness)	low-iron tempered glass / 3.2mm	
Backsheet (color)	white / black	
Cell (quantity / material / dimensions)	72 / monocrystalline silicon / 156.75×156.75mm	
Frame (material / color)	anodized aluminum alloy / silver	
Junction box (protection degree)	≥ IP67	
Cables & Plug connectors	Zhejiang Chuangyuan Photovoltaic Technology Co., Ltd. PV-CY05L; Rated voltage=1000VDC; Rated current=30A; Ip67 Zhejiang Jiaming Tianheyuan Photovoltaic Technology Co., Ltd. PV-JM601; Rated voltage=1000VDC; Rated current=16A; Ip67 Zhejiang Zhonghuan Sunter PV Technology Co., Ltd. PV-ZH202; Rated voltage=1000VDC; Rated current=30A; Ip67	
Module Dimensions (L / W / H)	1956mm x 992mm x 40mm	
Module Weight	21.6kg	

## PACKING DETAILS

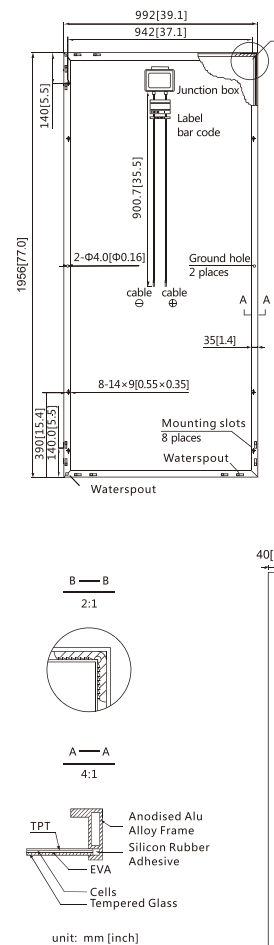
Container	20'GP	40'HQ
Pieces per pallet	52	58
Pallets per container	5	11
Pieces per container	260	638



**PERLIGHT**  
smart.black

Perlight Partners

## Module Diagram:



## Electrical Curves:

